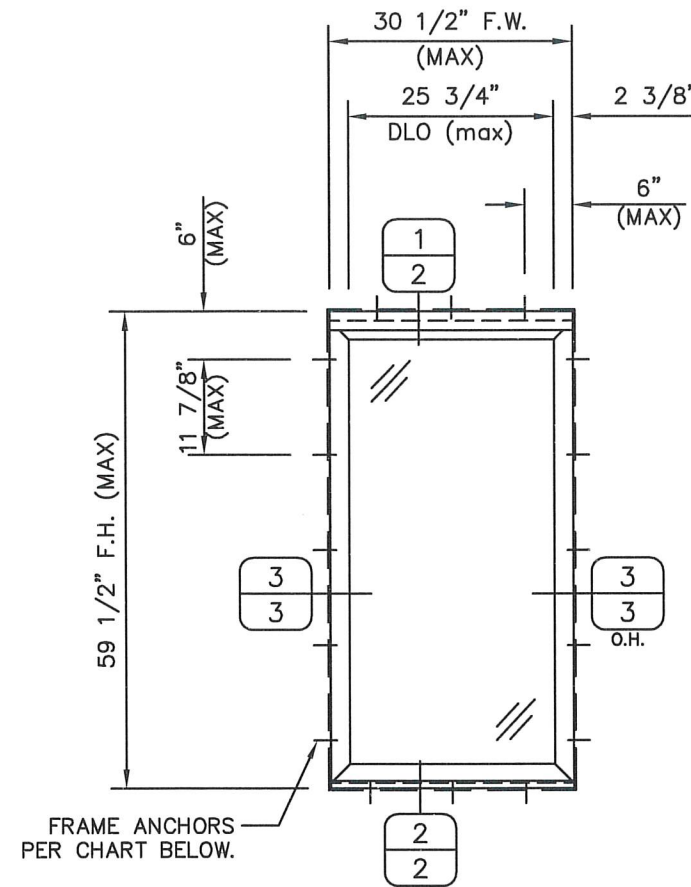


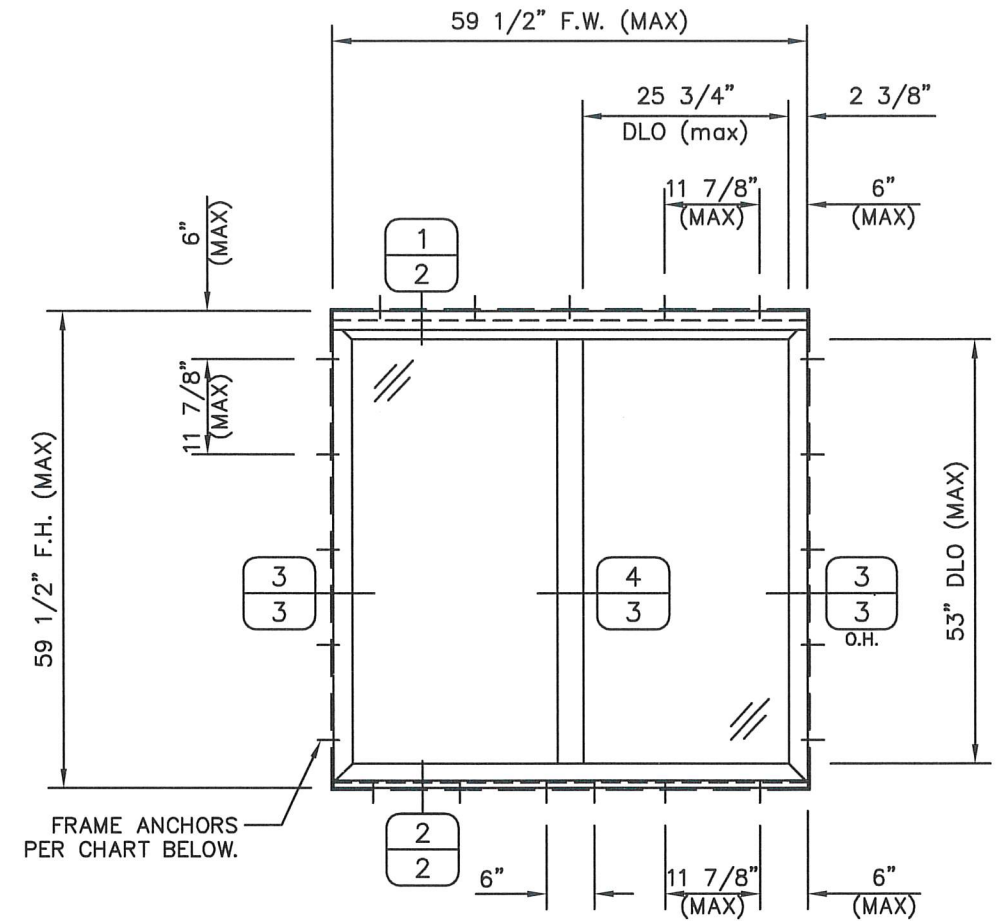
GV FACADE XT90 SERIES FIXED WINDOW

GENERAL NOTES:

1. THIS PRODUCT HAS BEEN TESTED PER TAS 201, 202, AND 203. IT MEETS ALL OF THE REQUIREMENTS OF THE 8TH EDITION (2023) FLORIDA BUILDING CODE, INCLUDING THE HIGH VELOCITY HURRICANE ZONE (HVHZ) PROVISIONS.
2. THIS PRODUCT IS LARGE AND SMALL MISSILE IMPACT RESISTANT, SHUTTERS ARE NOT REQUIRED.
3. THE DESIGN PRESSURES LISTED ARE ALLOWABLE STRESS DESIGN (ASD) PRESSURES, AS LIMITED BY ASTM E-1300, TESTED PRESSURES, AND CALCULATED ANCHOR LIMITATIONS.
4. OPENING SUBSTRATES, WOOD BUCKS (OPTIONAL), AND WOOD BUCK FASTENERS ARE BY OTHERS AND MUST BE DESIGNED AND INSTALLED PER FBC REQUIREMENTS TO SAFELY TRANSFER THE LOADS FROM THIS SYSTEM TO THE BUILDING STRUCTURE. SUBSTRATES SHALL MEET THE MIN STRENGTH REQUIREMENTS LISTED IN THE ANCHOR CHART BELOW.
5. ANCHOR TYPE, SIZE, SPACING, AND EMBEDMENT SHALL BE AS LISTED IN THE ANCHOR CHART BELOW, ANCHOR EMBEDMENT IN SUBSTRATE SHALL BE BEYOND ANY WALL DRESSING OR STUCCO.
6. ALL FASTENERS PENETRATING INTO PRESSURE TREATED WOOD SHALL BE CAPABLE OF PREVENTING CORROSION DUE TO REACTION WITH PRESSURE TREATMENT CHEMICALS.
7. NO INCREASES IN ALLOWABLE STRESS FOR SHORT-TERM LOADING HAVE BEEN USED IN THE DESIGN OF THIS SYSTEM. THE 1.6 Cd FACTOR HAS BEEN USED IN THE ANALYSIS OF WOOD SCREWS ONLY.
8. DISSIMILAR MATERIALS THAT COME INTO CONTACT SHALL BE PROTECTED TO PREVENT GALVANIC REACTIONS PER FBC REQUIREMENTS.
9. CORNER CONSTRUCTION - SEE SHEET 6/6.



"0" ELEVATION
(EXTERIOR VIEW)



"0-0" ELEVATION
(EXTERIOR VIEW)

ANCHOR CHART			
SUBSTRATE	FASTENER TYPE	MINIMUM EMBEDMENT	MIN EDGE DISTANCE
WOOD (S.G. = 0.42 min)	#10 DIA. WOOD SCREWS (SAE Gr. 2 min)	1 1/2"	1"
METAL STUDS (16 Ga, Fut=45 ksi min)	#10 DIA. TEKS-TYPE THREAD FORMING SCREWS	FULL*	1"
CONCRETE (3150 ksi, MIN)	3/16" DIA. DEWALT ULTRACON CONCRETE SCREW	1 3/4"	2 1/2"
CMU BLOCK (ASTM C90, MIN) (JAMBS ONLY)	3/16" DIA. DEWALT ULTRACON CONCRETE SCREW	1 3/4"	2 1/2"

* METAL SCREWS MUST FULLY PENETRATE THE WALL OF THE METAL STUD, WITH THREE ADDITIONAL THREADS BEYOND.

DESIGN PRESSURE
+/- 60 PSF

DATE	2/28/24
REV.#	
ISSUED FOR	PRINTS
1ST SUBMITTAL	

SCOTT WOLTERS
FL PE# 62354

WOLTERS ENGINEERING
(CO.# 27194)
15211 97TH ROAD N
WEST PALM BEACH, FL 33412
(561) 225-1982

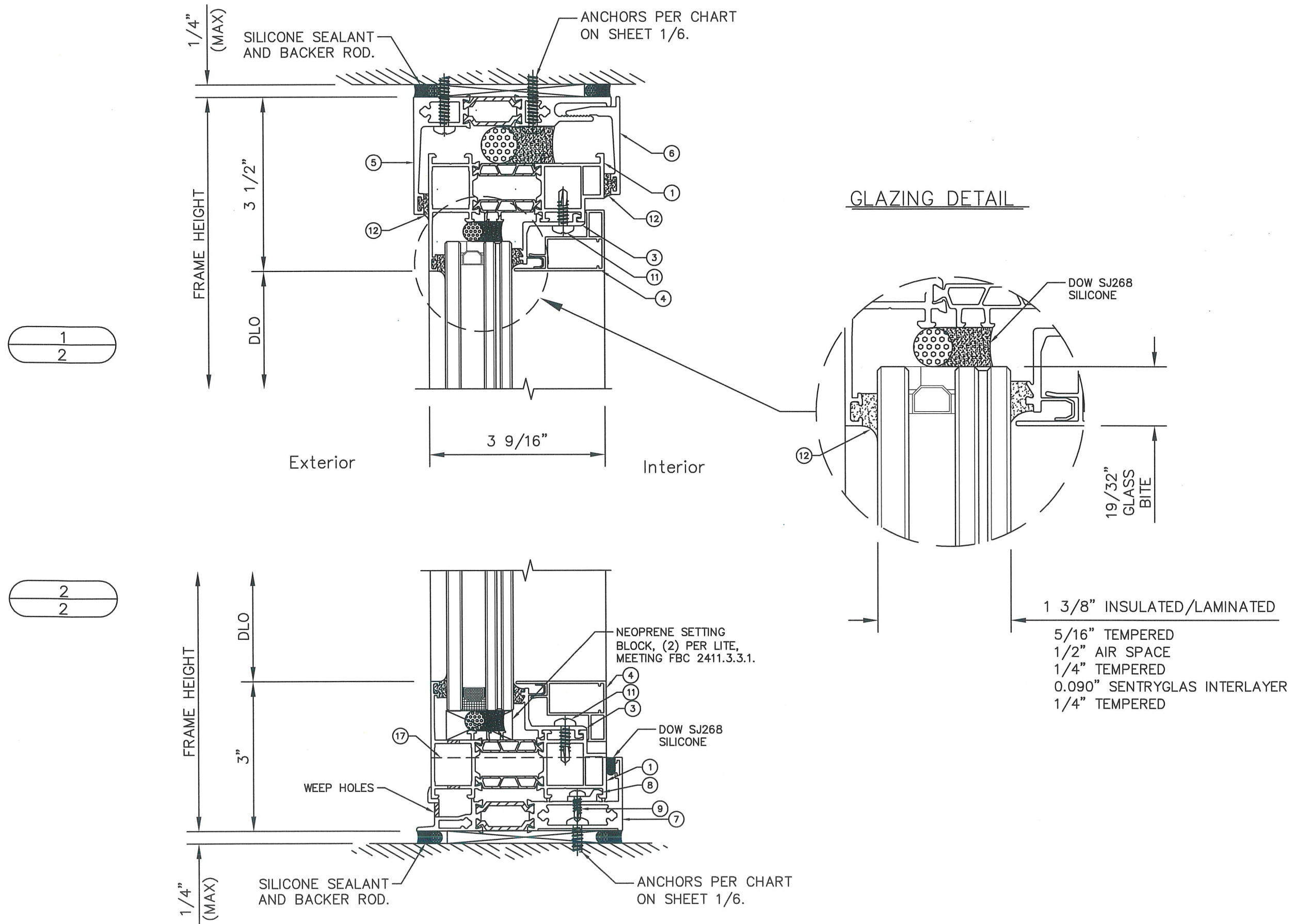
GRANITI VICENTIA GROUP

PH: (713) 515-2116
info@granitivicentia.com
www.granitivicentia.com

GV FACADE, LLC
2135 HIGHWAY 6 SOUTH
HOUSTON, TX 77077

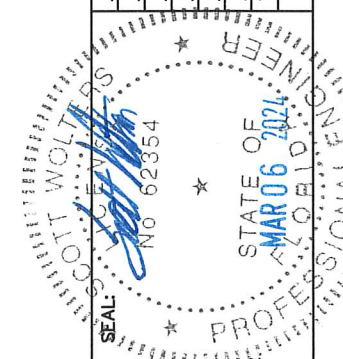
DWG: **XT90F-HZ**
SHEET: **1/6**

GV FACADE XT90 SERIES FIXED WINDOW



1
2

2
2



SCOTT WALTERS
FL PE# 62354

WALTERS ENGINEERING
(COA# 27194)
15211 97TH ROAD N
WEST PALM BEACH, FL 33412
(561) 225-1982

GRANITI VICENTIA GROUP

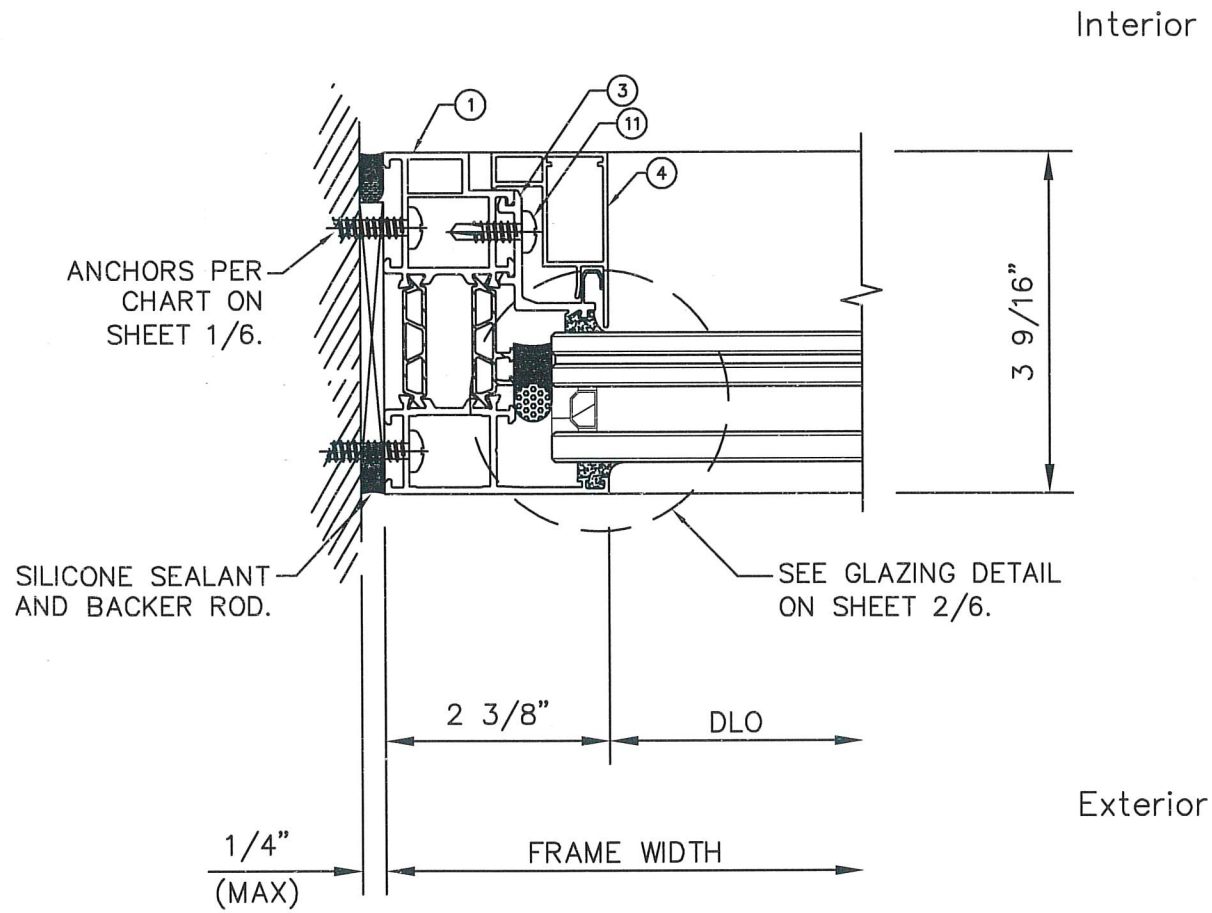
PH: (713) 515-2116
info@granitivicentia.com
www.granitivicentia.com

GV FACADE, LLC
2135 HIGHWAY 6 SOUTH
HOUSTON, TX 77077

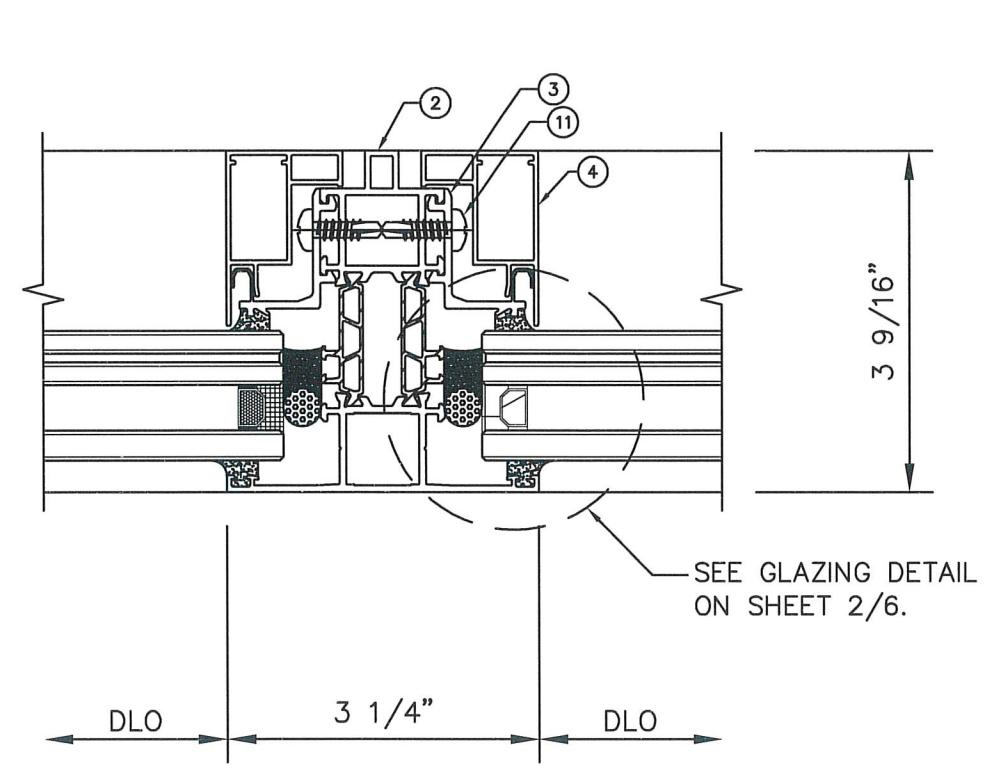
DWG: **XT90F-HZ**
SHEET: **2/6**

REV.#	ISSUED FOR	DATE
1	TEST SUBMITTAL	2/28/24
2	PRINTS	

GV FACADE XT90 SERIES FIXED WINDOW



3
3



4
3



SCOTT WALTERS
FL PE# 62354
WALTERS ENGINEERING
(CO.# 27194)
15211 97TH ROAD N
WEST PALM BEACH, FL 33412
(561) 225-1982

GRANITI VICENTIA
GROUP
PH: (713) 515-2116
info@granitivicentia.com
www.granitivicentia.com

GV
GV FACADE, LLC
2135 HIGHWAY 6 SOUTH
HOUSTON, TX 77077

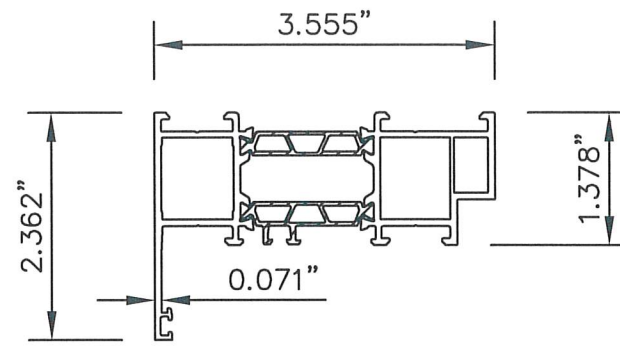
DWG: **XT90F-HZ**
SHEET: **3/6**

REV.#	ISSUED FOR	DATE
1	1ST SUBMITTAL	2/28/24
2	PRINTS	
3		
4		

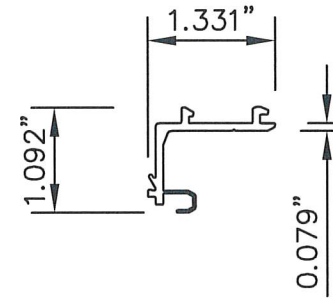
GV FACADE XT90 SERIES FIXED WINDOW

BILL OF MATERIALS

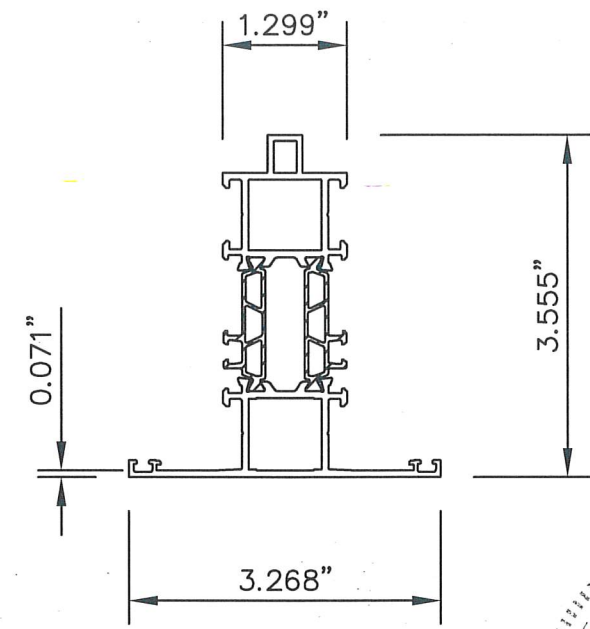
NO.	DESCRIPTION	MATERIAL	NOTES
01	FRAME HEAD/SILL/JAMB	6063-T5 ALUMINUM	
02	MULLION	6063-T5 ALUMINUM	
03	GLASS STOP	6063-T5 ALUMINUM	
04	COVER	6063-T5 ALUMINUM	
05	HEAD RECEPTOR	6063-T5 ALUMINUM	
06	RECEPTOR STOP	6063-T5 ALUMINUM	
07	SUB-SILL	6063-T5 ALUMINUM	
08	SUB-SILL STOP	6063-T5 ALUMINUM	
09	#8x1/2" PH TEKS SCREW	300 SERIES SS	
11	#10x5/8" PH TEKS SCREW	300 SERIES SS	3" FROM ENDS, 9" MAX. O.C.
12	GASKET	SILICONE	
13	CORNER KEY	6063-T5 ALUMINUM	
14	MULLION SHEAR BLOCK	6063-T5 ALUMINUM	
15	MULLION SHEAR BLOCK	6063-T5 ALUMINUM	
16	#12x1/2" PH MACHINE SCREW	STAINLESS STEEL	
17	SUB-SILL END DAM	ALUM BRAKE METAL	



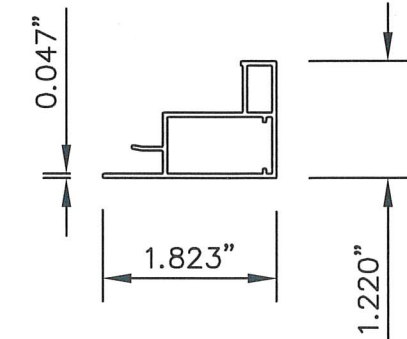
1



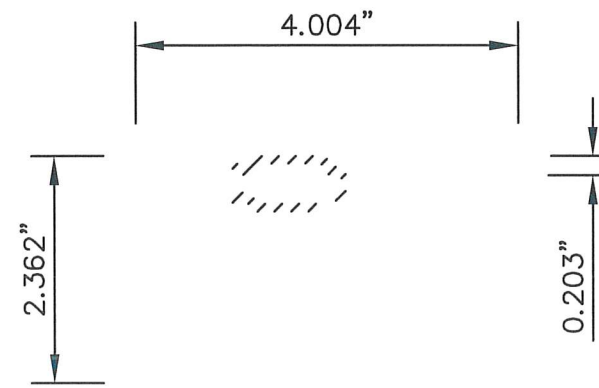
3



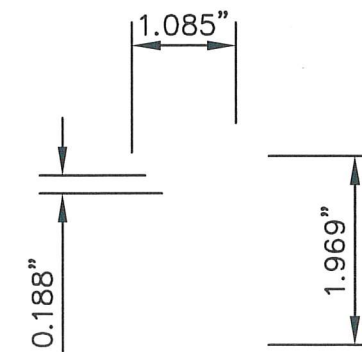
2



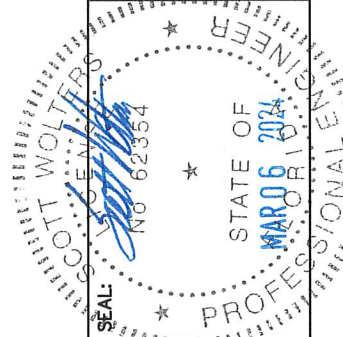
4



5



6



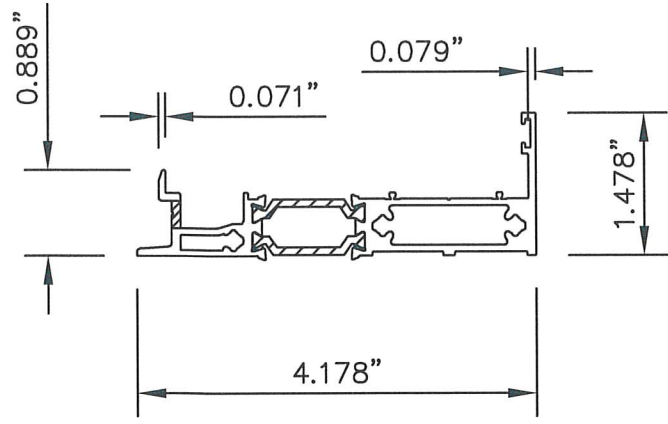
SCOTT WALTERS
FL PE# 62354
WALTERS ENGINEERING
(CO.# 27194)
15211 97TH ROAD N
WEST PALM BEACH, FL 33412
(561) 225-1982

GRANITI VICENTIA GROUP
GV FACADE, LLC
2135 HIGHWAY 6 SOUTH
HOUSTON, TX 77077
PH: (713) 515-2116
info@granitivicentia.com
www.granitivicentia.com

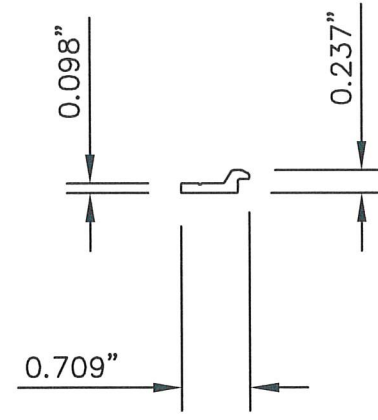
DWG: **XT90F-HZ**
SHEET: **4/6**

REV.#	DATE	ISSUED FOR
1	2/28/24	1ST SUBMITTAL PRINTS

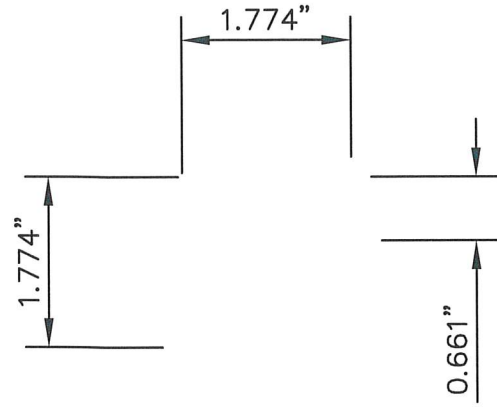
GV FACADE XT90 SERIES FIXED WINDOW



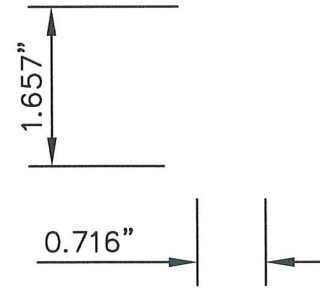
7



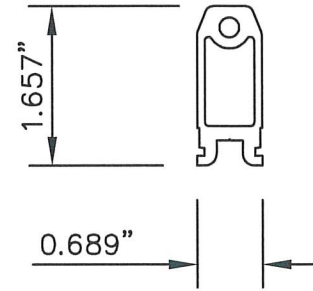
8



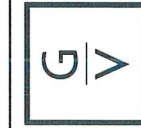
13



14



15



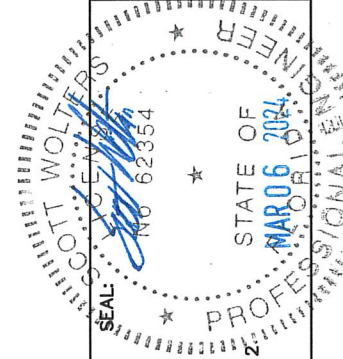
GV FACADE, LLC
2135 HIGHWAY 6 SOUTH
HOUSTON, TX 77077

GRANITI VICENTIA
GROUP

PH: (713) 515-2116
info@granitivicentia.com
www.granitivicentia.com

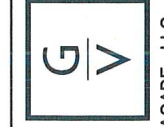
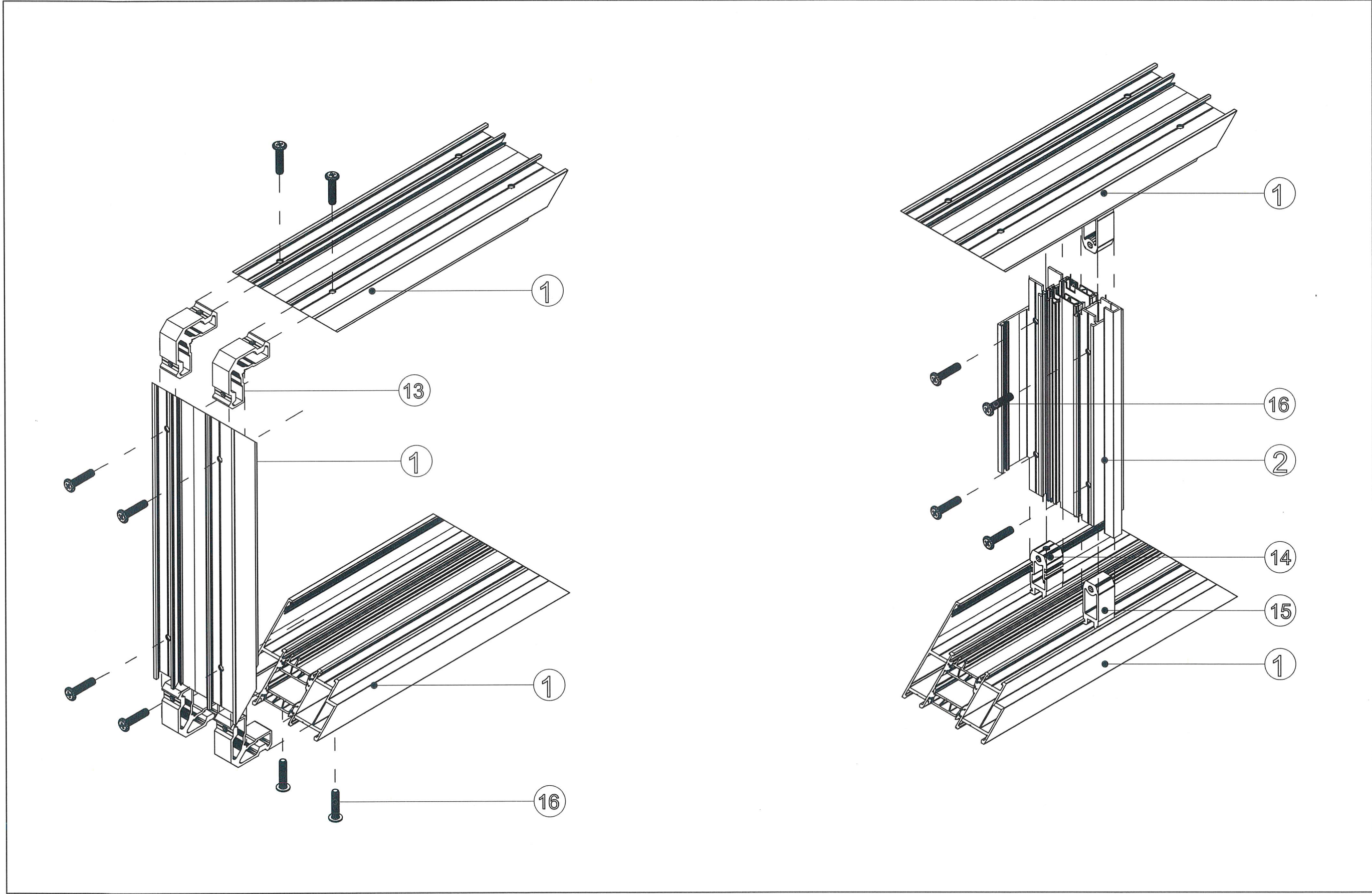
SCOTT WOLTERS
FL PE# 62354

WOLTERS ENGINEERING
(CO.# 27194)
15211 97TH ROAD N
WEST PALM BEACH, FL 33412
(561) 225-1982



REV.#	ISSUED FOR	DATE
1		
2		
3		
4		
5		
6		
7		
8		
9		
10		
11		
12		
13		
14		
15		
16		
17		
18		
19		
20		
21		
22		
23		
24		
25		
26		
27		
28		
29		
30		
31		
32		
33		
34		
35		
36		
37		
38		
39		
40		
41		
42		
43		
44		
45		
46		
47		
48		
49		
50		
51		
52		
53		
54		
55		
56		
57		
58		
59		
60		
61		
62		
63		
64		
65		
66		
67		
68		
69		
70		
71		
72		
73		
74		
75		
76		
77		
78		
79		
80		
81		
82		
83		
84		
85		
86		
87		
88		
89		
90		
91		
92		
93		
94		
95		
96		
97		
98		
99		
100		
101		
102		
103		
104		
105		
106		
107		
108		
109		
110		
111		
112		
113		
114		
115		
116		
117		
118		
119		
120		
121		
122		
123		
124		
125		
126		
127		
128		
129		
130		
131		
132		
133		
134		
135		
136		
137		
138		
139		
140		
141		
142		
143		
144		
145		
146		
147		
148		
149		
150		
151		
152		
153		
154		
155		
156		
157		
158		
159		
160		
161		
162		
163		
164		
165		
166		
167		
168		
169		
170		
171		
172		
173		
174		
175		
176		
177		
178		
179		
180		
181		
182		
183		
184		
185		
186		
187		
188		
189		
190		
191		
192		
193		
194		
195		
196		
197		
198		
199		
200		

GV FACADE XT90 SERIES FIXED WINDOW



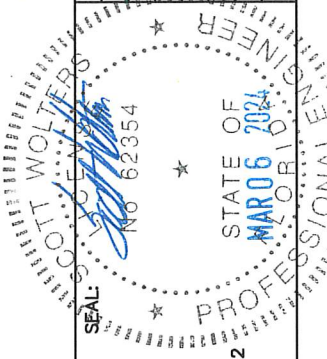
GV FACADE, LLC
2135 HIGHWAY 6 SOUTH
HOUSTON, TX 77077

GRANITI VICENTIA GROUP

PH: (713) 515-2116
info@granitivicentia.com
www.granitivicentia.com

SCOTT WOLTERS
FL PE# 62354

WOLTERS ENGINEERING
(COA# 27194)
15211 97TH ROAD N
WEST PALM BEACH, FL 33412
(561) 225-1982



REV.#	ISSUED FOR	DATE
1	PRINTS	2/28/24
2		
3		
4		
5		
6		
7		
8		
9		
10		
11		
12		
13		
14		
15		
16		
17		
18		
19		
20		
21		
22		
23		
24		
25		
26		
27		
28		
29		
30		
31		
32		
33		
34		
35		
36		
37		
38		
39		
40		
41		
42		
43		
44		
45		
46		
47		
48		
49		
50		